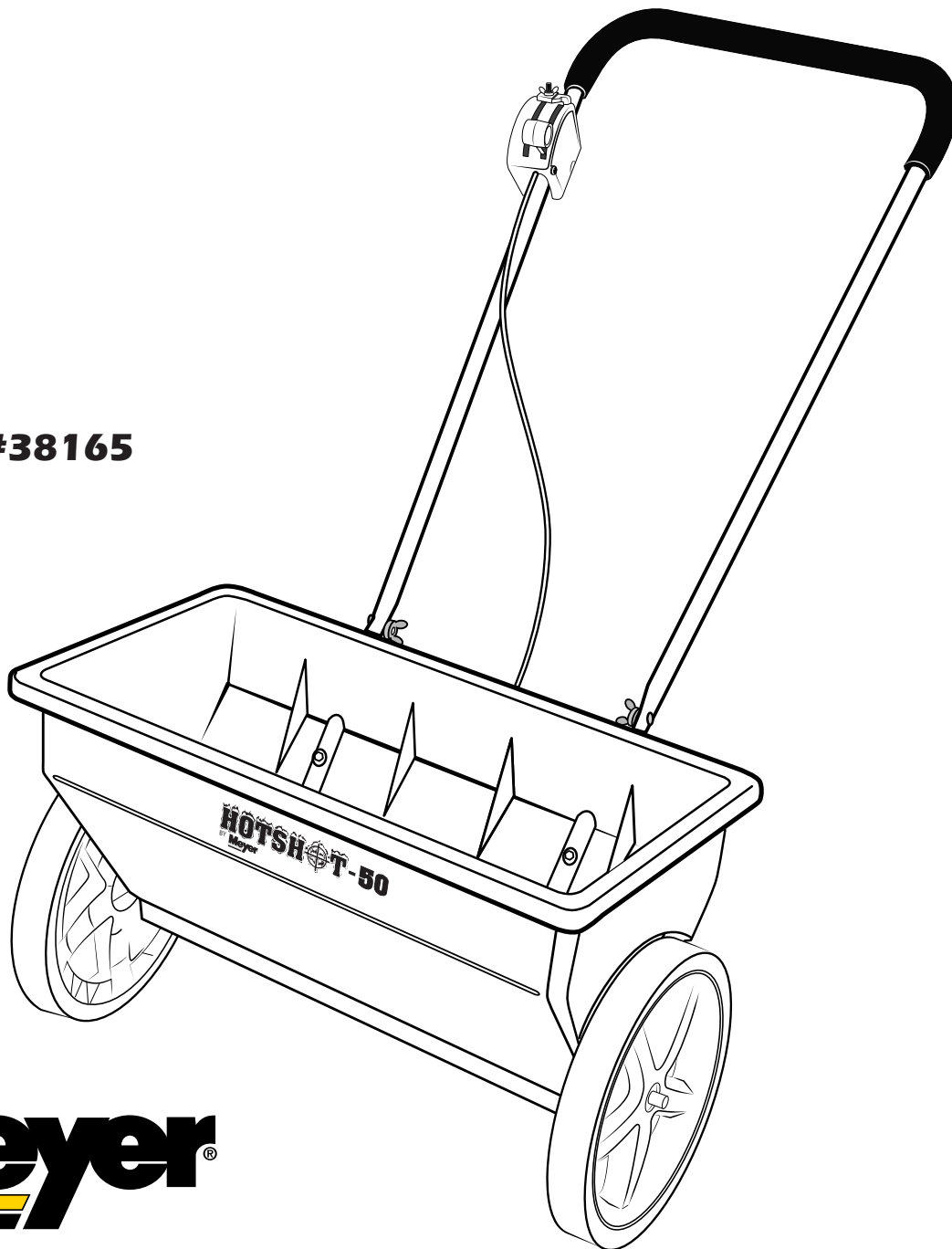


HOTSHOT-50 DROP SPREADER

Model #38165



Meyer[®]

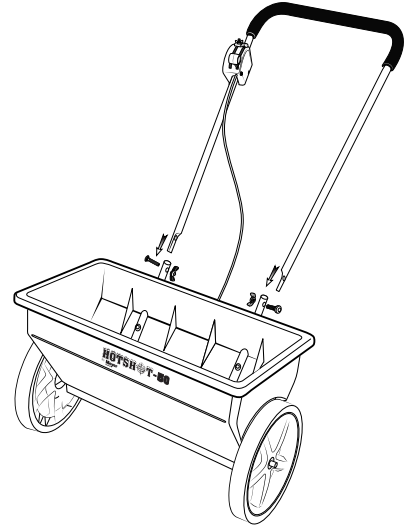
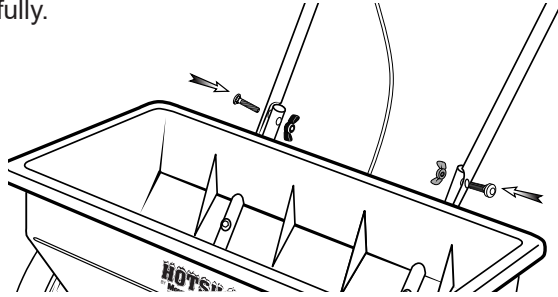
High Performance Snow & Ice Control Equipment

OWNER'S MANUAL

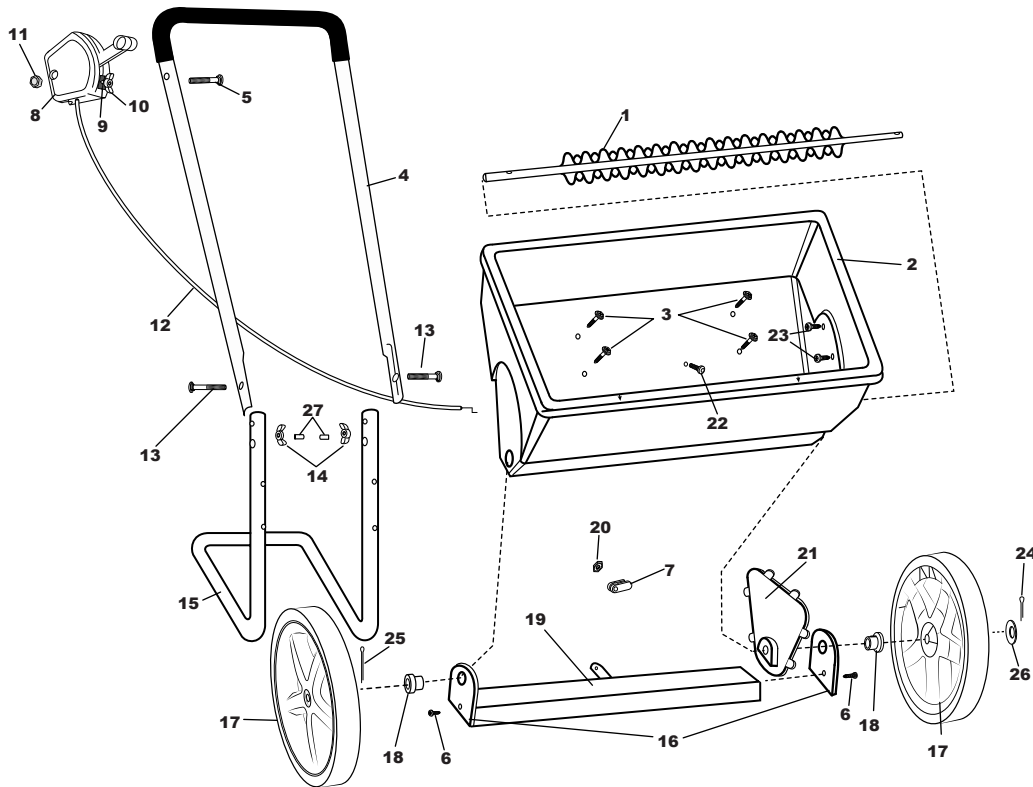
ASSEMBLY

Reference Parts List below for part identification

- 1.** Remove spreader from the carton.
- 2.** Remove the (#14) Wing Nut from the (#13) 1/4 - 20 x 2" Carriage Bolt and from the (#15) Frame.
- 3.** Now install (#4) Upper Handle onto the outside of the (#15) Frame and install (#13) Carriage Bolts and (#14) Wing Nuts as shown in the Parts List. Tighten fully.



PARTS LIST FOR HOTSHOT 50



Meyer Products, Inc.

18513 Euclid Ave
Cleveland, Ohio 44112
216-486-1313

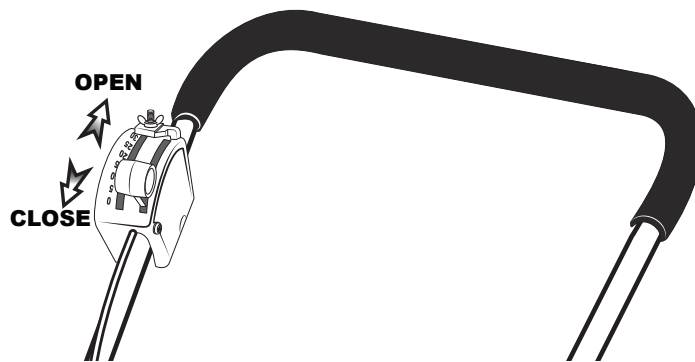
www.meyerproducts.com

HOTSHOT 50 Parts List

Key	Part#	Description	Key	Part#	Description	Key	Part#	Description
1	PSB60272	AGITATOR AXLE ASSEMBLY	10	PSB32106	10-24 WING NUT ZINC	19	PSB12176	SHUT OFF
2	PSB16131-MY	HOPPER ASSEMBLY	11	PSB32100	1/4-20 HEX NUT ZINC	20	PSB32108	10-24 HX. NUT ZINC PLATED
3	PSB31141	#14 X 3/4" TYPE "AB" HWHS	12	PSB60379	WIRE HSG ASSEMBLY	21	PSB12261	END CAP HOPPER
4	PSB60205	UPPER HANDLE W/GRIP	13	PSB37106	1/4-20 X 2" CARRIAGE BOLT	22	PSB37111	10-24 X 1" CARRIAGE BOLT
5	PSB37108	1/4-20 X 1 3/4" CARRIAGE BLT	14	PSB60027	WING NUT ASSEMBLY	23	PSB36208	#6 X 3/8" TYPE 25 PHPS S.S.
6	PSB31133	#8 X 3/4 PHPS TYPE A	15	PSB25113	FRAME	24	PSB33106	1/8" X 3/4" COTTER PIN ZINC
7	PSB12319	UPPER HOUSING CLIP	16	PSB12265	END CAP SHUT OFF	25	PSB33107	1/8" X 1 3/4" COTTER PIN S.S.
8	PSB60526	CONTROL ASSEMBLY	17	PSB70109DR	5 SPOKE 12" WHEEL	26	PSB34103	1"OD X 17/32"ID X 1/32" WASHER
9	PSB12223	INDICATOR-DROP	18	PSB12132	BEARING	27	PSB70142	NUT PROTECTOR .234 ID. X .375 IL.

OPERATION

- ☑ Before filling hopper, make sure spreader control is in the "CLOSED" position. Always fill spreader on walk or drive, not on the lawn.
- ☑ Position the rate control stop to the desired setting. If setting is not known, try different settings until desired results are achieved.
- ☑ Always push spreader, do not pull. Start spreader in motion and as it passes over the area to be treated, move the control lever to "OPEN" to the "STOP" position. Push to "CLOSE" the spreader at the end of each pass.
- ☑ Operate spreader at normal walking speed
- ☑ Apply two header strips at each end of the area to be treated and then proceed length-wise between the header strips. Be sure to overlap the wheel tracks slightly to prevent missed strips.
- ☑ Apply ice melt prior to the storm to reduce unmanageable levels of ice and snow.



MAINTENANCE

1. Never store material in spreader. Return unused product to its original container.
2. Wash spreader thoroughly after each use and dry completely in the sun or heated area.
3. Lubricate the metal control wire at the hopper mounting point regularly, we recommend a parafin based (chapstick type) lubricant.
4. To reduce the possibility of rust, coat the inside of all steel tubing with Fluid Film or similar corrosion inhibitor. Store spreader with shut-off in open #30 position.



WARRANTY

Meyer Products, Inc. warrants to Purchaser the following:

Meyer Products, Inc., warrants to the original purchaser for a period of one year from the date of purchase of Meyer® brand spreader products that they will be free from defects in materials or workmanship, with the exceptions stated below. No person is authorized to change this warranty or to create any additional warranty on Meyer® products.

Meyer Products will repair any product that proves to be defective in materials or workmanship. In the event repair is not possible or practical (as determined by Meyer Products in its sole discretion), Meyer Products will either replace the product with a new product of similar model and price, or refund the full purchase price, as determined by Meyer Products. Customer must keep the complete spreader system serviced/maintained as recommended by Meyer Products.

This warranty does not cover:

- Problems caused by failure to follow the product instructions, or failure to maintain the product as described in the Operator's Manual;
- Damage resulting from rust, corrosion
- Damage caused by usage that is not in accordance with product instructions (use of the spreader for any purpose other than spreading approved material is considered misuse and abuse);
- Any spreader, or any part, component, or assembly thereof, which has been modified or altered;
- Problems caused by using accessories, parts, or components not supplied by Meyer Products;
- Cost of tax, freight, transportation or storage charges, environmental charges, solvents, sealants, lubricants or any other normal shop supplies.
- Problems caused by collision, fire, theft, vandalism, riot, explosion, lightning, earthquake, windstorm, hail, water, flood, or any other Acts of God;
- Liability for damage to property, or injury to, or death of any person arising out of the operation, maintenance or use of the covered product;
- Products with missing or altered serial numbers;

How To Get Service:

- It is the responsibility of the original purchaser to establish the warranty period by verifying the original delivery date. A bill of sale, cancelled check or some other

appropriate payment record may be kept for that purpose. It is recommended, but not required, that the consumer verify the original delivery date by immediately returning the attached Warranty Registration Card.

How State Law Applies:

This warranty gives you specific legal rights, and you may also have other rights which vary from state to state.

